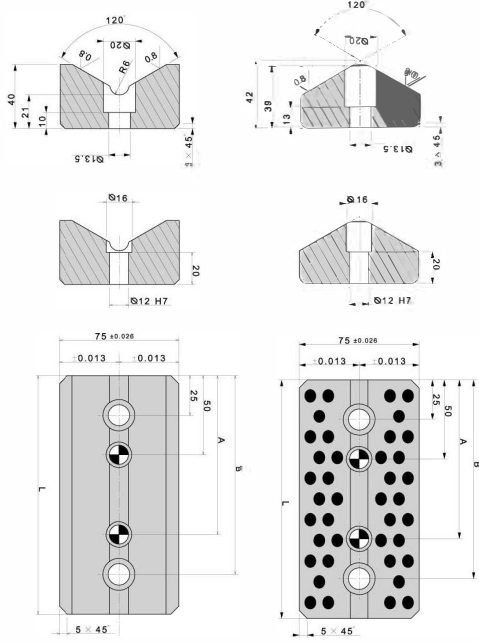
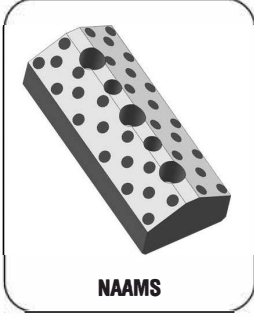


www.nunoendustri.com

V KIZAK



SIPARIŞ ÖRNEĞİ

SPV01 150 200
A L

Not: Toleranssız tüm ölçüler EN 22768-1(m) standardına göre tüm köşelere pah kırılacak.

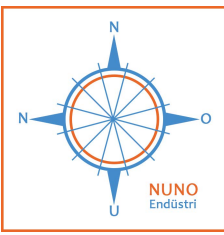
Malzeme S: Erkek Yatak CK45 58-60 HRC Çelik + Grafit

Malzeme B: Erkek Yatak SAE430 HB > 180 özel grafit

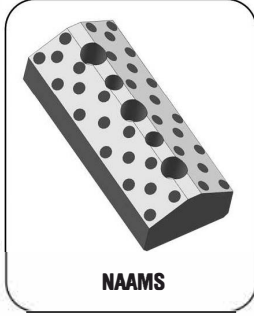
Malzeme A: Dişi Yatak CK45 58-60 HRC Çelik

SPV01

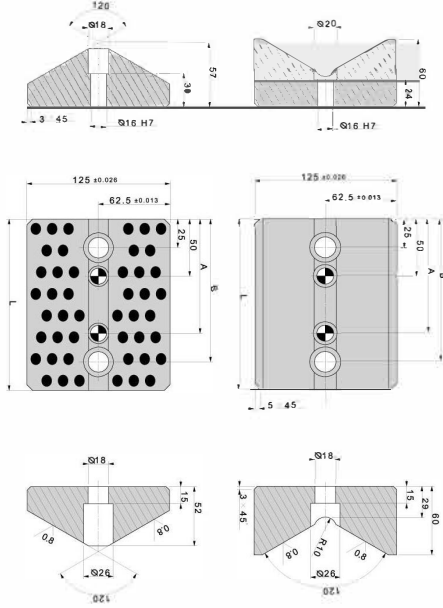
L ▶	150 ▼	200 ▼	150 ▼	200 ▼	150 ▼	200 ▼
A ▶	100	150	100	150	100	150
Tip ▶	A	A	S	S	B	B
B ▶	125	175	125	175	125	175



www.nunoendustri.com



NAAMS



SİPARİŞ ÖRNEĞİ
SPV02 100 150
A L

Not: Toleranssız tüm ölçüler EN 22768-1(m) standardına göre tüm köşelere pah kırılacak.

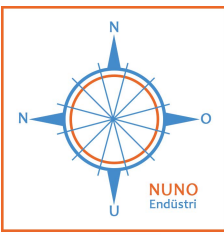
Malzeme S: Erkek Yatak CK45 58-60 HRC Çelik + Grafit

Malzeme B: Erkek Yatak SAE430 HB > 180 özel grafit

Malzeme A: Dişi Yatak CK45 58-60 HRC Çelik

SPV02

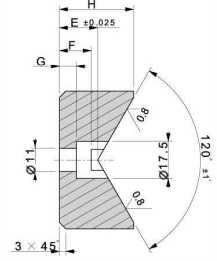
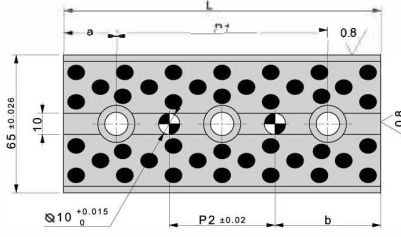
L ▶	150▼	200▼	150▼	200▼	150▼	200▼
A ▶	100	150	100	150	100	150
Tip ▶	A	A	S	S	B	B
B ▶	125	175	125	175	125	175



www.nunoendustri.com



OPEL



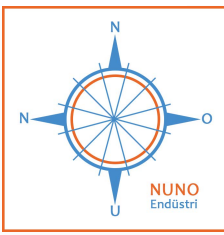
SIPARIŞ ÖRNEĞİ
SPV03 300
L

Not: Toleranssız tüm ölçüler EN 22768-1(m) standardına göre tüm köşelere pah kırılacak.

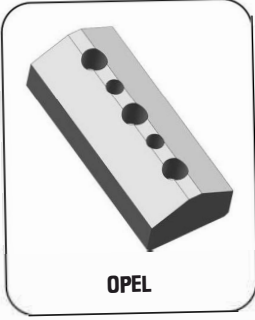
Malzeme: SAE 430B HB>180 kendinden yağlanmayı sağlayan özel grafit

SPV03

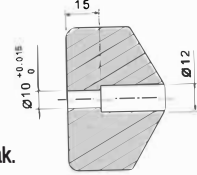
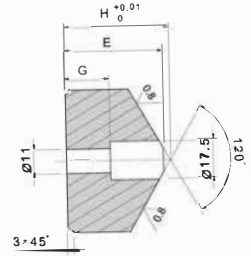
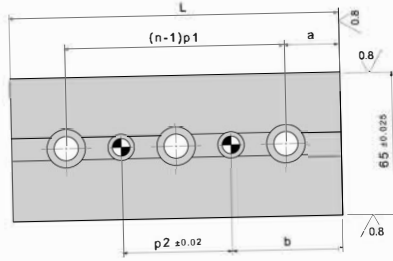
L ▶	100 ▼	150 ▼	200 ▼	250 ▼	300 ▼
H ▶	35	35	35	35	35
E ▶	18	18	18	18	18
F ▶	15	15	15	15	15
G ▶	8	8	8	8	8
A ▶	20	25	25	25	25
P1 ▶	60	50	50	50	50
Delik Sayısı ▶	2	3	4	5	6
B ▶	40	50	50	50	50
P2 ▶	20	50	100	150	200



www.nunoendustri.com



OPEL

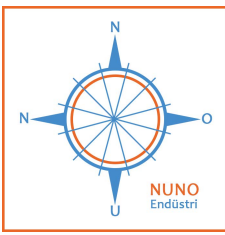


SİPARİŞ ÖRNEĞİ
SPV04 250
L

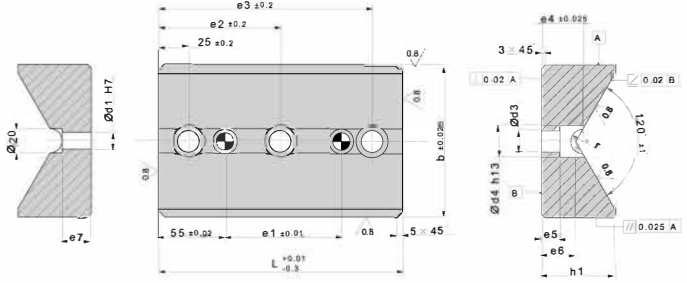
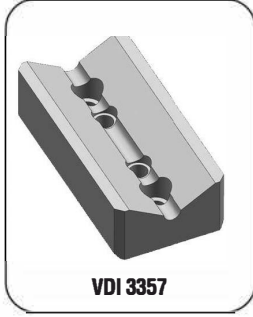
Not: Toleranssız tüm ölçüler EN 22768-1(m) standardına göre tüm köşelere pah kırılacak.
Malzeme: CK45 58-60 HRC Çelik

SPV04

	100▼	150▼	200▼	250▼	300▼
L▶	100	150	200	250	300
H▶	35	35	35	35	35
E▶	18	18	18	18	18
F▶	15	15	15	15	15
G▶	8	8	8	8	8
A▶	20	25	25	25	25
P1▶	60	50	50	50	50
Delik Sayısı▶	2	3	4	5	6
B▶	40	50	50	50	50
P2▶	20	50	100	150	200



www.nunoendustri.com

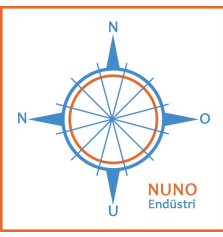


SİPARİŞ ÖRNEĞİ
SPV05 65 250
b L

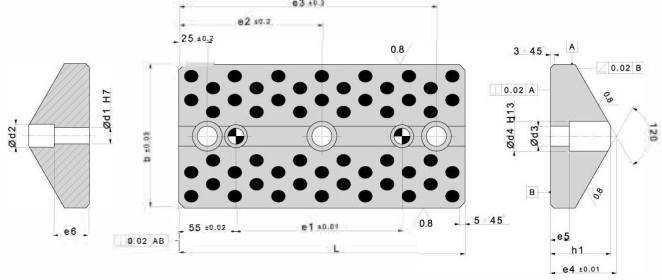
Not: Toleransız tüm ölçüler EN 22768-1(m) standardına göre tüm köşelere pah kırılacak.
Malzeme: CK45 58-60 HRC Çelik

SPV05

b ▶	65▼			125▼			
L ▶	150	200	250	150	200	250	300
d1 ▶	12	12	12	16	16	16	16
d2 ▶	16	16	16	20	20	20	20
d3 ▶	13.5	13.5	13.5	17.5	17.5	17.5	17.5
d4 ▶	20	20	20	26	26	26	26
e1 ▶	45	95	145	45	95	145	195
e2 ▶	-	-	125	-	-	125	150
e3 ▶	125	175	225	125	175	225	275
e4 ▶	18	18	18	28	28	28	28
e5 ▶	8	8	8	15	15	15	15
e6 ▶	22	22	22	34	34	34	34
h1 ▶	35	35	35	60	60	60	60
h2 ▶	65	65	65	85	85	85	85
Delik Sayısı ▶	2	2	3	2	2	3	3



www.nunoendustri.com

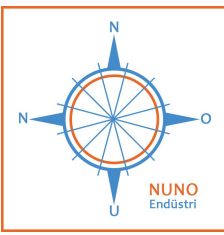


SİPARİŞ ÖRNEĞİ
SPV06 250
L

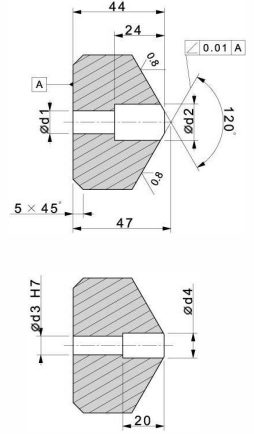
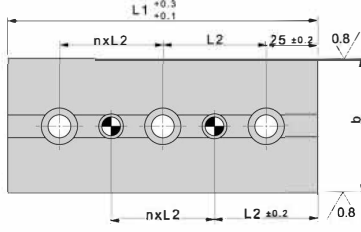
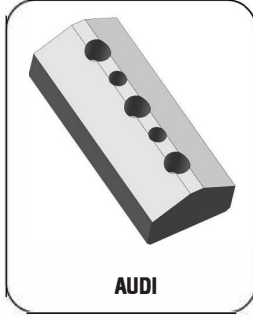
Not: Toleranssız tüm ölçüler EN 22768-1(m) standardına göre tüm köşelere pah kırılacak.
Malzeme: SAE 430B HB>180 kendinden yağlanmayı sağlayan özel grafit

SPV06

b ▶	65▼			125▼			
L ▶	150	200	250	150	200	250	300
d1 ▶	12	12	12	16	16	16	16
d2 ▶	16	16	16	20	20	20	20
d3 ▶	13.5	13.5	13.5	17.5	17.5	17.5	17.5
d4 ▶	20	20	20	26	26	26	26
e1 ▶	45	95	145	45	95	145	195
e2 ▶	-	-	125	-	-	125	150
e3 ▶	125	175	225	125	175	225	275
e4 ▶	47	47	47	57	57	57	57
e5 ▶	20	20	20	16	16	16	16
e6 ▶	20	20	20	30	30	30	30
h1 ▶	44	44	44	52	52	52	52
h2 ▶	65	65	65	85	85	85	85
Delik Sayısı ▶	2	2	3	2	2	3	3



www.nunoendustri.com

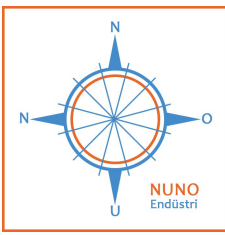


SİPARİŞ ÖRNEĞİ
 SPV07 65 200
 b L1

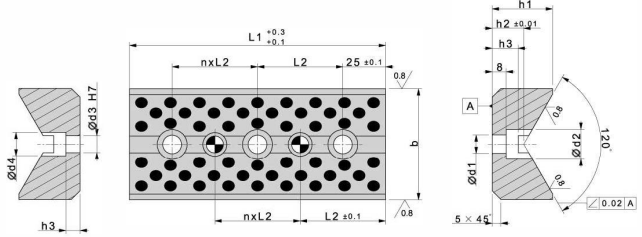
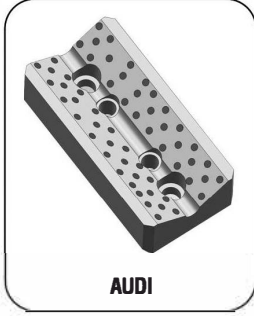
Not: Toleranssız tüm ölçüler EN 22768-1(m) standardına göre tüm köşelere pah kırılacak.
Malzeme: CK45 58-60 HRC Çelik

SPV07

b ▶	65▼				125▼			
L1 ▶	150	200	250	300	150	200	250	300
L2 ▶	50	75	65	75	50	75	65	75
h ▶	47	47	47	47	52	52	52	52
H ▶	65	65	65	65	85	85	85	85
d1 ▶	17.5	17.5	17.5	17.5	26	26	26	26
d2 ▶	10	10	10	10	16	16	16	16
d3 ▶	12	12	12	12	18	18	18	18
n ▶	1	1	2	2	1	1	2	2
Delik Sayısı ▶	3	3	4	4	3	3	4	4



www.nunoendustri.com



SIPARIŞ ÖRNEĞİ

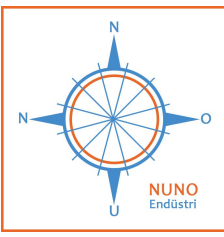
SPV08 65 300
b L1

Not: Toleranssız tüm ölçüler EN 22768-1(m) standardına göre tüm köşelere pah kırılacak.

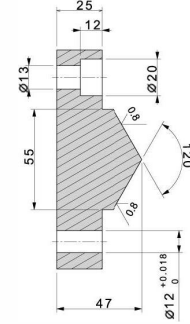
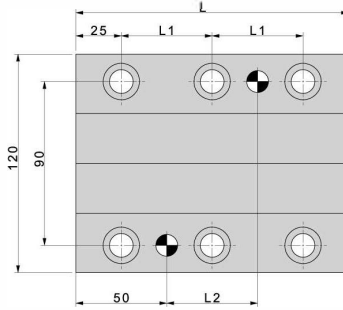
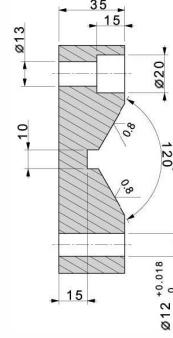
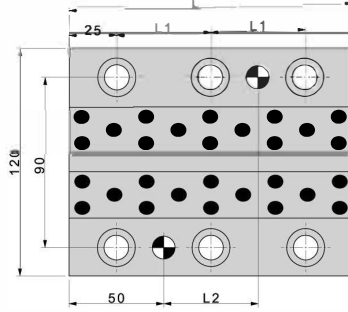
Malzeme: SAE 430B HB>180 kendinden yağlanmayı sağlayan özel grafit

SPV08

b ▶	65▼				125▼			
L1 ▶	150	200	250	300	150	200	250	300
L2 ▶	50	75	65	75	50	75	65	75
h1 ▶	35	35	35	35	60	60	60	60
h2 ▶	18	18	18	18	33	33	33	33
h3 ▶	15	15	15	15	30	30	30	30
d1 ▶	11	11	11	11	18	18	18	18
d2 ▶	18	18	18	18	26	26	26	26
d3 ▶	10	10	10	10	16	16	16	16
d4 ▶	-	-	-	-	18	18	18	18
n ▶	1	1	2	2	1	1	2	2
Delik Sayısı ▶	3	3	4	4	3	3	4	4



www.nunoendustri.com



SIPARIŞ ÖRNEĞİ

SPV09 F 300
A L

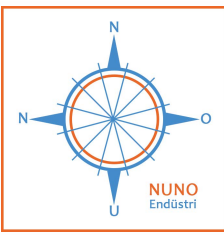
Not: Toleranssız tüm ölçüler EN 22768-1(m) standardına göre bağlama delikleri arası toleransı: +/-0.12 Pim delikleri arası tolerans: +/-0.01 tüm köşelere pah kırılacak.

Malzeme S: CK45 58-60 HRC Çelik

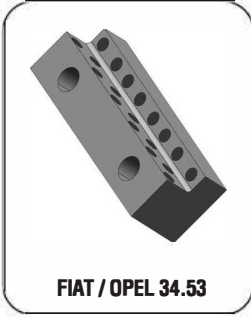
Malzeme B: SAE430 HB > 180 özel grafit

SPV09

L ▶	150 ▼	200 ▼	250 ▼	300 ▼	150 ▼	200 ▼	250 ▼	300 ▼
Form ▶	A	A	A	A	B	B	B	B
L1 ▶	50	75	100	125	50	75	100	125
L2 ▶	50	100	150	200	50	100	150	200

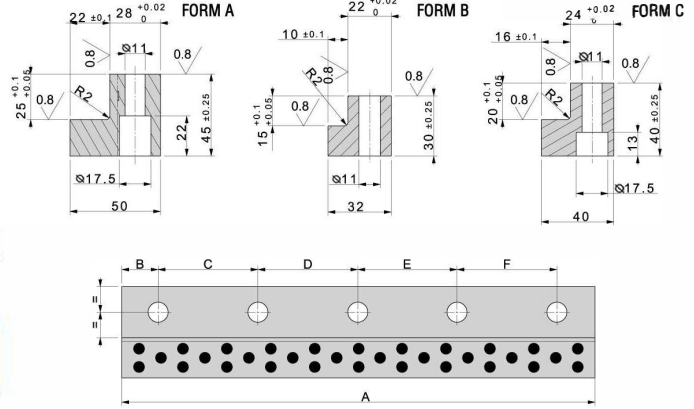


www.nunoendustri.com



FIAT / OPEL 34.53

SIPARIŞ ÖRNEĞİ
SPL01 150 B
A F



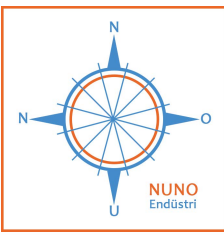
Not: Toleranssız tüm ölçüler EN 22768-1(m) standardına göre tüm köşelere pah kırılacak.

Malzeme: SAE430B HB > 180 kendinden yağlanmayı sağlayan özel grafit.

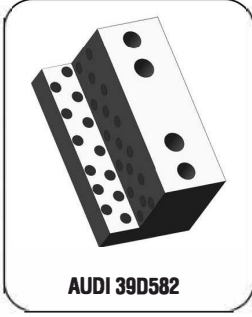
Tüm plakalar aynı zamanda grafitsiz CK45 çelik olarak da mevcuttur.

SPL01

A ▶	100 ▼	150 ▼	200 ▼	250 ▼	300 ▼	160 ▼	250 ▼
Form ▶	B	B	A	A	A	C	C
B ▶	20	20	20	20	20	15	25
C ▶	60	55	55	70	65	130	80
D ▶	-	55	50	70	65	-	130
E ▶	-	-	55	70	65	-	-
F ▶	-	-	-	-	65	-	-
Delik ▶	2	3	4	4	5	2	3



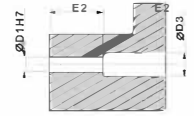
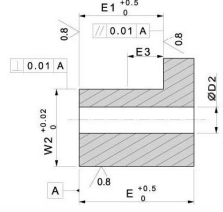
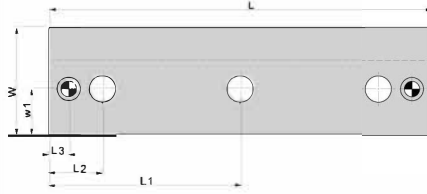
www.nunoendustri.com



AUDI 39D582

SİPARİŞ ÖRNEĞİ

SPL02 70 160
W L



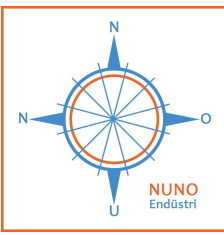
Not: Toleranssız tüm ölçüler EN 22768-1(m) standardına göre tüm köşelere pah kırılacak.

Malzeme: SAE430B HB > 180 kendinden yağlanmayı sağlayan özel grafit.

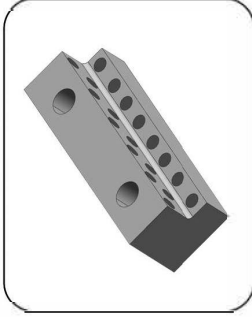
Tüm plakalar aynı zamanda grafitless CK45 çelik olarak da mevcuttur.

SPL02

W ▶	55▼		70▼			85▼		
L ▶	100	160	160	200	250	160	200	250
E ▶	55	55	75	75	75	90	90	90
W1 ▶	20	20	30	30	30	38	38	38
W2 ▶	37	37	50	50	50	63	63	63
E ▶	23	23	35	35	35	45	45	45
E1 ▶	39	39	55	55	55	65	65	65
E2 ▶	30	30	35	35	35	35	35	35
L1 ▶	-	-	-	-	125	-	-	125
L2 ▶	28	28	35	35	35	43	43	43
L3 ▶	10	10	13	13	13	15	15	15
D1 ▶	10	10	12	12	12	16	16	16
D2 ▶	13	13	17	17	17	22	22	22
D3 ▶	11	11	13	13	13	17	17	17

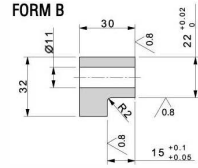
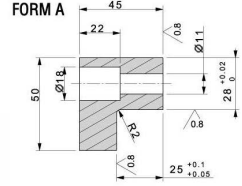
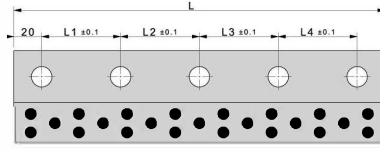


www.nunoendustri.com



SİPARİŞ ÖRNEĞİ

SPL03 A 250
F A



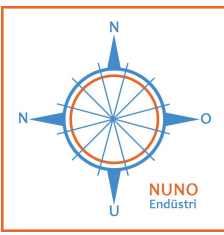
Not: Toleranssız tüm ölçüler EN 22768-1(m) standardına göre tüm köşelere pah kırılacak.

Malzeme: SAE430B HB > 180 kendinden yağlanmayı sağlayan özel grafit.

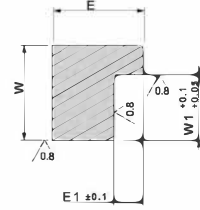
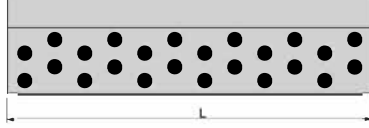
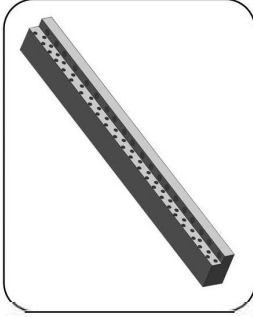
Tüm plakalar aynı zamanda grafitless CK45 çelik olarak da mevcuttur.

SPL03

L ▶	100▼	150▼	200▼	250▼	250▼	300▼	350▼
Form ▶	A	A	A	A	B	B	B
L1 ▶	60	55	55	70	70	65	80
L2 ▶	-	55	50	70	70	65	75
L3 ▶	-	-	55	70	70	65	75
L4 ▶	-	-	-	-	-	65	80



www.nunoendustri.com



SIPARIŞ ÖRNEĞİ

SPL04 35 605
W L

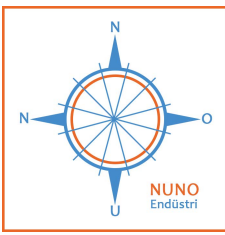
Not: Toleranssız tüm ölçüler EN 22768-1(m) standardına göre tüm köşelere pah kırılacak.

Malzeme: SAE430B HB > 180 kendinden yağlanmayı sağlayan özel grafit.

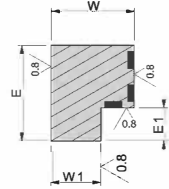
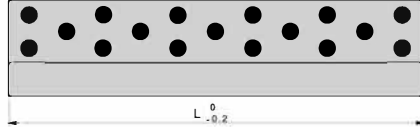
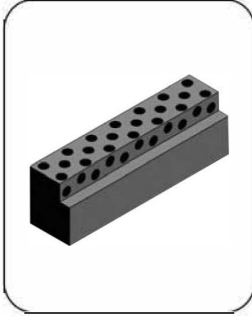
Tüm plakalar aynı zamanda grafitless CK45 çelik olarak da mevcuttur.

SPL04

W ▶	12▼	15▼	20▼	30▼	30▼	45▼	45▼	35▼	35▼	50▼	50▼
L ▶	305	305	305	605	1005	605	1005	605	1005	605	1005
E ▶	20	25	30	32	32	50	50	35	35	50	50
W1 ▶	6	8	12	15	15	25	25	24	24	34	34
E1 ▶	5	7	9	10	10	22	22	12	12	16	16



www.nunoendustri.com



SIPARIŞ ÖRNEĞİ

SPL05 16 80
E L

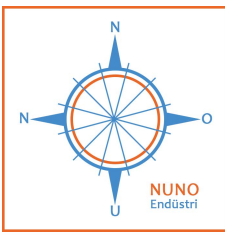
Not: Toleranssız tüm ölçüler EN 22768-1(m) standardına göre tüm köşelere pah kırılacak.

Malzeme: SAE430B HB > 180 kendinden yağlanmayı sağlayan özel grafit.

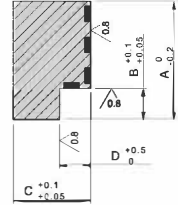
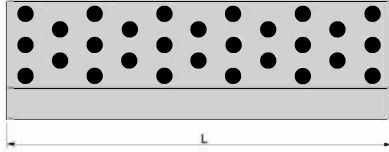
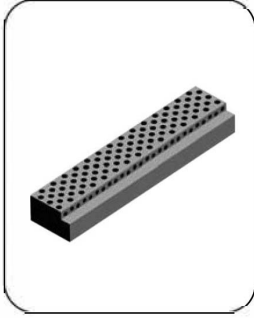
Tüm plakalar aynı zamanda grafitless CK45 çelik olarak da mevcuttur.

SPL05

E ▶	16 ▼				20 ▼				25 ▼				32 ▼				40 ▼				50 ▼			
L ▶	50	63	80	100	63	80	100	125	80	100	125	160	100	125	160	200	125	160	200	250	160	200	250	315
E1 ▶	8	8	8	8	8	8	8	8	8	8	8	8	10	10	10	10	10	10	10	10	12	12	12	12
W ▶	16	16	16	16	20	20	20	20	20	20	20	20	25	25	25	25	25	25	25	25	32	32	32	32
W1 ▶	11	11	11	11	15	15	15	15	15	15	15	15	19	19	19	19	19	19	19	19	24	24	24	24



www.nunoendustri.com



SİPARİŞ ÖRNEĞİ

SPL06 66 320
A L

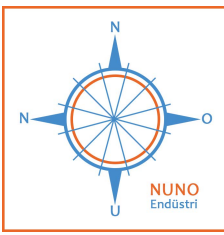
Not: Toleranssız tüm ölçüler EN 22768-1(m) standardına göre tüm köşelere pah kırılacak.

Malzeme: SAE430B HB > 180 kendinden yağlanmayı sağlayan özel grafit.

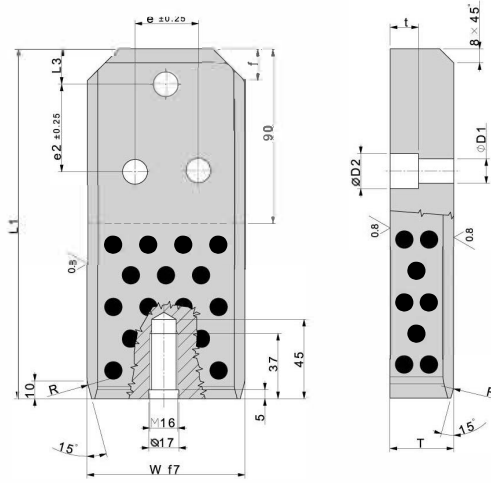
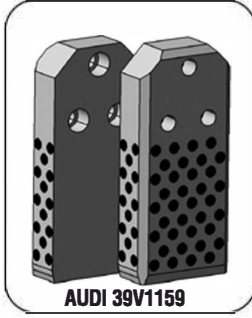
Tüm plakalar aynı zamanda grafitless CK45 çelik olarak da mevcuttur.

SPL06

A▶	12▼	17▼	17▼	22▼	22▼	27▼	27▼	36▼	36▼	46▼	46▼	66▼	66▼	86▼	86▼
L▶	205	205	320	205	320	205	320	205	320	205	320	205	320	205	320
B▶	5	7	7	7	7	10	10	10	10	10	10	22	22	26	26
C▶	15	20	20	20	20	28	28	28	28	28	28	40	40	40	40
D▶	5	5	5	5	5	8	8	8	8	8	8	12	12	12	12



www.nunoendustri.com



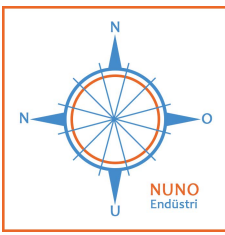
SİPARİŞ ÖRNEĞİ

SKS01 63 224 36
W L1 T

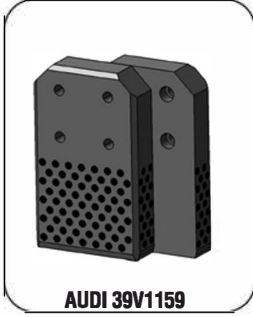
Not: Toleransız tüm ölçüler EN 22768-1(m) standardına göre tüm köşelere pah kırılacak.
Malzeme: CK45 HRC 56 - 60 kendinden yağlanmayı sağlayan özel grafit.

SKS01

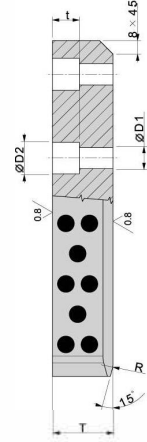
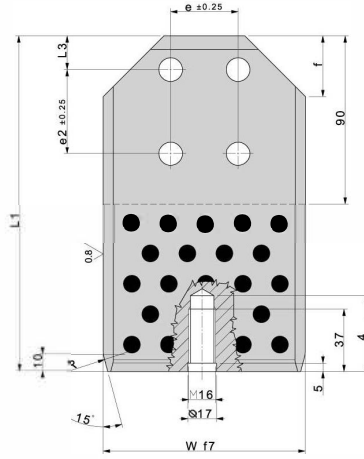
W ▶	63 ▼						71 ▼						90 ▼						112 ▼					
L1 ▶	180	200	224	180	200	224	180	220	224	180	200	224	200	224	250	200	224	250	200	224	250	200	224	250
T ▶	25	25	25	36	36	36	25	25	25	36	36	36	36	36	36	45	45	45	36	36	36	45	45	45
D1 ▶	14	14	14	14	14	14	14	14	14	14	14	14	18	18	18	18	18	18	18	18	18	18	18	18
D2 ▶	20	20	20	20	20	20	20	20	20	20	20	20	26	26	26	26	26	26	26	26	26	26	26	26
e1 ▶	36	36	36	36	36	36	36	36	36	36	36	36	50	50	50	50	50	50	50	50	50	50	50	50
e2 ▶	50	50	50	50	50	50	50	50	50	50	50	50	50	50	50	50	50	50	50	50	50	50	50	50
f ▶	18	18	18	18	18	18	18	18	18	18	18	18	28	28	28	28	28	28	28	28	28	28	28	28
L2 ▶	90	90	90	90	90	90	90	90	90	90	90	90	100	100	100	100	100	100	100	100	100	100	100	100
L3 ▶	20	20	20	20	20	20	20	20	20	20	20	20	20	20	20	20	20	20	20	20	20	20	20	20
t ▶	16	16	16	16	16	16	16	16	16	16	16	16	21	21	21	21	21	21	21	21	21	21	21	21
R ▶	16	16	16	16	16	16	16	16	16	16	16	16	25	25	25	25	25	25	25	25	25	25	25	25
Din 912 ▶	M12x40						M12x40						M16x40						M16x40					



www.nunoendustri.com



AUDI 39V1159



SIPARIŞ ÖRNEĞİ

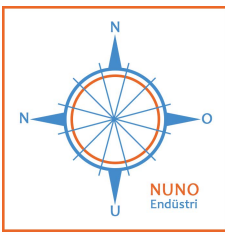
SKS02 140 46 315
W T L1

Not: Toleransız tüm ölçüler EN 22768-1(m) standardına göre tüm köşelere pah kırılacak.

Malzeme: CK45 HRC 56 - 60 kendinden yağlanmayı sağlayan özel grafit.

SKS02

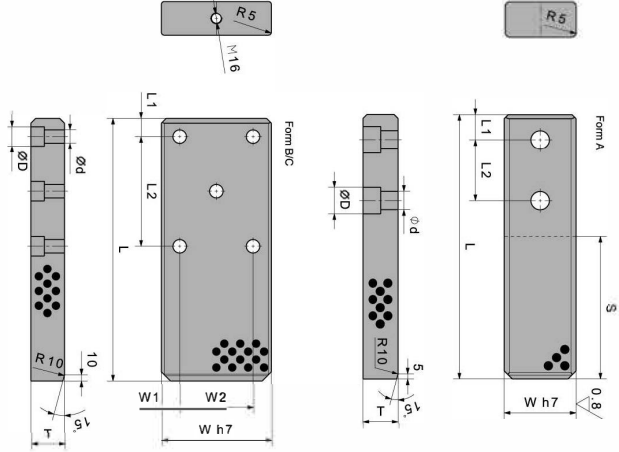
W ▶	140 ▼					190 ▼					240 ▼					290 ▼							
T ▶	45	45	45	56	56	45	45	56	56	71	71	56	56	71	71	90	90	56	56	71	71	90	90
L1 ▶	315	355	400	315	400	315	400	315	400	315	400	500	630	500	630	500	630	500	630	500	630	500	630
D1 ▶	22	22	22	22	22	22	22	22	22	22	22	26	26	26	26	26	26	26	26	26	26	26	26
D2 ▶	33	33	33	33	33	33	33	33	33	33	33	40	40	40	40	40	40	40	40	40	40	40	40
e1 ▶	90	90	90	90	90	90	90	90	90	90	90	160	160	160	160	160	160	160	160	160	160	160	160
e2 ▶	80	80	80	80	80	80	80	80	80	80	80	160	160	160	160	160	160	160	160	160	160	160	160
f ▶	36	36	36	36	36	36	36	36	36	36	36	36	36	36	36	36	36	36	36	36	36	36	36
L2 ▶	150	150	150	150	150	150	150	150	150	150	150	250	250	250	250	250	250	250	250	250	250	250	250
L3 ▶	40	40	40	40	40	40	40	40	40	40	40	40	40	40	40	40	40	40	40	40	40	40	40
t ▶	26	26	26	26	26	26	26	26	26	26	26	31	31	31	31	31	31	31	31	31	31	31	31
R ▶	31.5	31.5	31.5	31.5	31.5	31.5	31.5	31.5	31.5	31.5	31.5	31.5	31.5	31.5	31.5	31.5	31.5	31.5	31.5	31.5	31.5	31.5	31.5
Din 912 ▶	M20x50		M20x70			M20x50		M20x70		M20x80		M20x80			M20x100		M20x80		M20x100				



www.nunoendustri.com



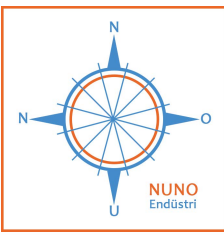
SİPARİŞ ÖRNEĞİ
SKS03 120 280
W L



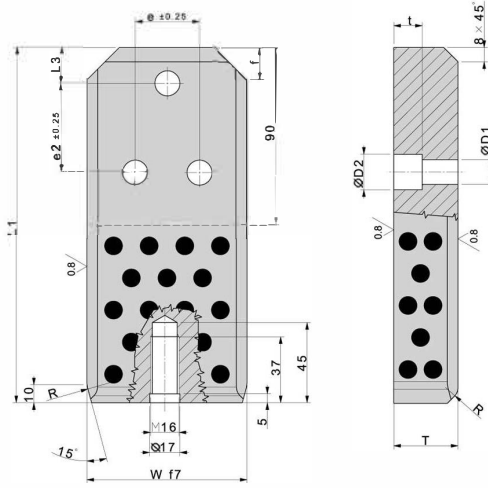
Not: Toleranssız tüm ölçüler EN 22768-1(m) standardına göre tüm köşelere pah kırılacak.
Malzeme: CK45 HRC 56 - 60 kendinden yağlanmayı sağlayan özel grafit.

SKS03

W ▶	50▼				70▼				100▼				120▼				150▼				180▼				
L ▶	160	200	260	230	260	300	350	230	280	330	390	230	280	330	390	280	330	390	430	280	330	390	430	480	550
T ▶	30	30	30	35	35	35	35	45	45	45	45	45	45	45	45	50	50	50	50	55	55	55	55	55	55
S ▶	60	120	120	100	160	160	150	100	160	160	200	100	160	160	200	160	190	190	190	160	190	190	190	200	250
L1 ▶	20	20	20	25	25	25	30	30	30	30	30	30	30	30	30	30	30	30	30	30	30	30	30	30	30
L2 ▶	50	50	80	60	60	75	150	60	60	100	120	60	60	100	120	60	80	140	180	60	80	140	180	200	225
W1 ▶	-	-	-	-	-	-	-	20	20	20	20	30	30	30	30	30	30	30	30	30	30	30	30	30	30
W2 ▶	-	-	-	-	-	-	-	60	60	60	60	60	60	60	60	60	90	90	90	90	120	120	120	120	120
Form ▶	A	A	A	A	A	A	A	B	B	B	B	B	B	B	B	B	B	B	B	B	B	B	C	C	C
Delik ▶	2	2	2	2	2	2	2	4	4	4	4	4	4	4	4	4	4	4	4	4	4	5	5	5	
d ▶	18	18	18	18	18	18	18	22	22	22	22	22	22	22	22	22	22	22	22	22	22	22	22	22	22
D ▶	26	26	26	26	26	26	26	32	32	32	32	32	32	32	32	32	32	32	32	32	32	32	32	32	32
t ▶	18	18	18	18	18	18	18	22	22	22	22	22	22	22	22	22	22	22	22	22	22	22	22	22	22



www.nunoendustri.com

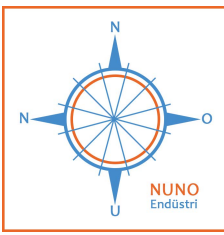


SİPARİŞ ÖRNEĞİ
SKB04 90 250 36
W L1 T

Not: Toleranssız tüm ölçüler EN 22768-1(m) standardına göre tüm köşelere pah kırılacak.
Malzeme: SAE 430B HB>180 kendinden yağlanmayı sağlayan özel grafit

SKB04

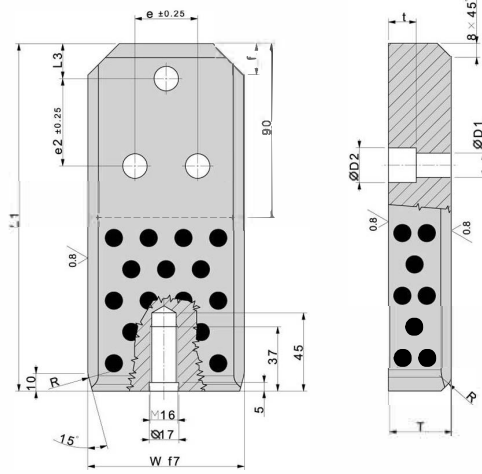
W ▶	63▼						71▼						90▼						112▼					
L1 ▶	180	200	224	180	200	224	180	220	224	180	200	224	200	224	250	200	224	250	200	224	250	200	224	250
T ▶	25	25	25	36	36	36	25	25	25	36	36	36	36	36	36	45	45	45	36	36	36	45	45	45
D1 ▶	14	14	14	14	14	14	14	14	14	14	14	14	18	18	18	18	18	18	18	18	18	18	18	18
D2 ▶	20	20	20	20	20	20	20	20	20	20	20	20	20	26	26	26	26	26	26	26	26	26	26	26
e1 ▶	36	36	36	36	36	36	36	36	36	36	36	36	50	50	50	50	50	50	50	50	50	50	50	50
e2 ▶	50	50	50	50	50	50	50	50	50	50	50	50	50	50	50	50	50	50	50	50	50	50	50	50
f ▶	18	18	18	18	18	18	18	18	18	18	18	18	28	28	28	28	28	28	28	28	28	28	28	28
L2 ▶	90	90	90	90	90	90	90	90	90	90	90	90	100	100	100	100	100	100	100	100	100	100	100	100
L3 ▶	20	20	20	20	20	20	20	20	20	20	20	20	20	20	20	20	20	20	20	20	20	20	20	20
t ▶	16	16	16	16	16	16	16	16	16	16	16	16	21	21	21	21	21	21	21	21	21	21	21	21
R ▶	16	16	16	16	16	16	16	16	16	16	16	16	25	25	25	25	25	25	25	25	25	25	25	25
Din 912 ▶	M12x40						M12x40						M16x40						M16x40					



www.nunoendustri.com



SİPARİŞ ÖRNEĞİ
SKB05 140 56 400
W T L1



Not: Toleranssız tüm ölçüler EN 22768-1(m) standardına göre tüm köşelere pah kırılacak.
Malzeme: SAE 430B HB>180 Kendinden yağlanmayı sağlayan özel grafit

SKB05

W ▶	140▼					190▼					240▼					290▼							
T ▶	45	45	45	56	56	45	45	56	56	71	71	56	56	71	71	90	90	56	56	71	71	90	90
L1 ▶	315	355	400	315	400	315	400	315	400	315	400	500	630	500	630	500	630	500	630	500	630	500	630
D1 ▶	22	22	22	22	22	22	22	22	22	22	22	26	26	26	26	26	26	26	26	26	26	26	26
D2 ▶	33	33	33	33	33	33	33	33	33	33	33	40	40	40	40	40	40	40	40	40	40	40	40
e1 ▶	90	90	90	90	90	90	90	90	90	90	90	160	160	160	160	160	160	160	160	160	160	160	160
e2 ▶	80	80	80	80	80	80	80	80	80	80	80	160	160	160	160	160	160	160	160	160	160	160	160
f ▶	36	36	36	36	36	36	36	36	36	36	36	36	36	36	36	36	36	36	36	36	36	36	36
L2 ▶	150	150	150	150	150	150	150	150	150	150	150	250	250	250	250	250	250	250	250	250	250	250	250
L3 ▶	40	40	40	40	40	40	40	40	40	40	40	40	40	40	40	40	40	40	40	40	40	40	40
t ▶	26	26	26	26	26	26	26	26	26	26	26	31	31	31	31	31	31	31	31	31	31	31	31
R ▶	31.5	31.5	31.5	31.5	31.5	31.5	31.5	31.5	31.5	31.5	31.5	31.5	31.5	31.5	31.5	31.5	31.5	31.5	31.5	31.5	31.5	31.5	31.5
ØIn 912 ▶	M20x50		M20x70			M20x50		M20x70		M20x80		M20x80			M20x100		M20x80		M20x100				